

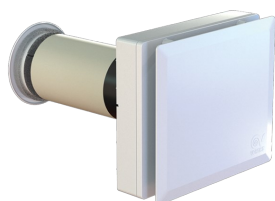
Technical Data Sheet

CODE 12436

VORT HRW 30 MONO EVO HCS



Decentralised heat recovery units



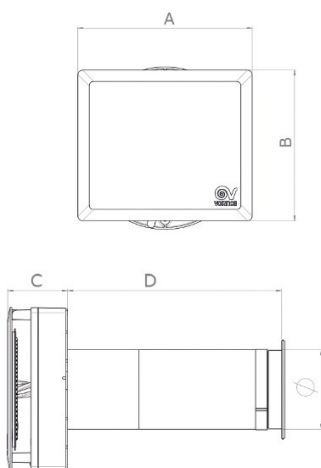
Certifications



TECHNICAL AND PERFORMANCE DATA

Absorbed Current max (A)	0,04	Max delivery at max speed (m ³ /h)	38
Absorbed Power max (W)	4	Maximum thermal efficiency (%)	90
Filter class	ISOCoarse 65%	Potenza sonora Lw [dB (A)] - max vel	66,8
Frequency (Hz)	50-60	Potenza sonora Lw [dB (A)] - min vel	36,6
Insulation Class	II°	Pressione sonora Lp [dB (A)] 3m - med vel	32,0
Max ambient temperature for continuous operation (°C)	30	Pressure - 1st speed (mmH2O)	1
Nominal Diameter (mm)	100	Pressure - 1st speed (Pa)	10
Voltage (V)	220-240	Pressure max - max speed (mmH2O)	13,7
Weight (Kg)	3,10	Pressure max - max speed (Pa)	130
Delivery 1st speed (l/s)	1,7	Sound power Lw [dB(A)] - mid speed	49,5
Delivery 1st speed (m ³ /h)	6	Sound pressure level Lp [dB (A)] 3m - max speed	49,2
Max delivery at max speed (l/s)	10,5	Sound pressure level Lp [dB (A)] 3m - min speed	19,1

DIMENSIONS



Diametro Ø (mm)	97
Size A (mm)	231
Size B (mm)	200
Size C (mm)	73
Size D (mm)	260

PER INFORMAZIONI:

Servizio al Cliente: tel +39 02 90699395 premendo 1 dopo messaggio registrato (consulenza su prodotti e impianti)

Pre & Post Vendita: fax +39 02 90699302

Email prevendita: prevendita@vortice-italy.com

Technical Data Sheet

CODE 12436

VORT HRW 30 MONO EVO HCS



Decentralised heat recovery units

DESCRIPTION

ACCESSORIES



TUBO PVC
D.100 L=700
(HRW 30)
Code 21879



MWS D.100
Code 21883



WA Ø 100
Code 21884



KIT FTR ISO
COARSE 65%
(G3) D.98X10
Code 21891

PER INFORMAZIONI:

Servizio al Cliente: tel +39 02 90699395 premendo 1 dopo messaggio registrato (consulenza su prodotti e impianti)

Pre & Post Vendita: fax +39 02 90699302

Email prevendita: prevendita@vortice-italy.com