

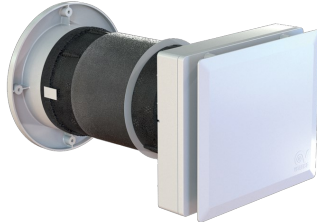
# Technical Data Sheet

CODE 12444

## VORT HRW 40 MONO EVO HCS WIFI



Decentralised heat recovery units



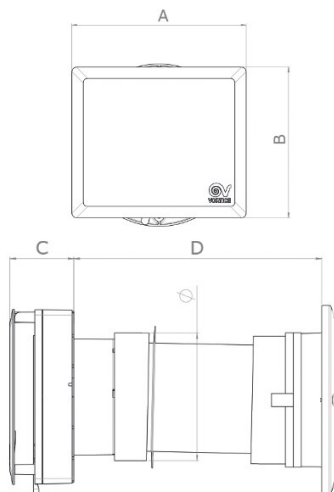
### Certifications



### TECHNICAL AND PERFORMANCE DATA

Frequency (Hz)	50-60	Max airflow at Max speed (m <sup>3</sup> /h)	40
Insulation class	II <sup>o</sup>	Max pressure at Max speed (mmH <sub>2</sub> O)	4,8
Max absorbed current (A)	0,05	Max pressure at Max speed (Pa)	47
Max absorbed power (W)	6	Max thermal efficiency (%)	90
Max ambient temperature for continuous operation (°C)	30	Pressure at 1st speed (mmH <sub>2</sub> O)	1,7
Nominal diameter (mm)	160	Pressure at 1st speed (Pa)	17
Voltage (V)	220-240	Sound power LWA at Max speed [dB (A)]	49,3
Weight (Kg)	3,30	Sound power LWA at Min speed [dB (A)]	36,5
Airflow at 1st speed (l/s)	4,2	Sound power at Mid speed LWA [dB(A)]	42,9
Airflow at 1st speed (m <sup>3</sup> /h)	15	Sound pressure at 3 m - min speed Lp [dB (A)] 3m - min speed	19
Max airflow at Max speed (l/s)	11,1	Sound pressure at 3m at Max speed Lp [dB (A)]	31,8
		Sound pressure Lp at 3m at Mid speed [dB (A)]	25,4

### DIMENSIONS



∅ (mm)	146
Size A (mm)	231
Size B (mm)	200
Size C (mm)	73
Size D (mm)	283

### PER INFORMAZIONI / FOR INFORMATION

#### ITALY

Pre Sales:

prevendita@vortice-italy.com

After Sales:

postvendita@vortice-italy.com

#### UNITED KINGDOM & REP. OF

IRELAND

Sales Dept:

sales@vortice.ltd.uk

Technical Dept:

technical@vortice.ltd.uk

#### OTHER COUNTRIES

Sales Dept:

export@vortice-italy.com

After Sales:

after-sales@vortice-italy.com

# Technical Data Sheet

CODE 12444

## VORT HRW 40 MONO EVO HCS WIFI



Decentralised heat recovery units

### DESCRIPTION

Decentralized heat recovery unit, equipped with a Wi-Fi module able to put in communication all the installed machines. Particularly suitable for installation in residential and commercial premises of new buildings or those subject to renovation for energy efficiency. Ideal, as well as to ensure proper air exchange, also to prevent excess humidity in the room and mold growth on the walls.

- Shockproof and anti-UV plastic resin structure.
- Nominal diameter: 160 mm.
- Ceramic exchanger with hexagonal cells. High heat exchange efficiency (up to 90% at minimum airflow).
- Wi-Fi module capable of establishing the communication between products through a local "mesh" network, allowing a coordinated functioning and a correct indoor ventilation.
- High efficiency EC motor fan; five operating speeds, to maximize performance when needed, or to minimize noise and consumption.
- Integrated relative humidity probe.
- One-way remote control that allows to set parameters or to view useful product information. In detail:
  - to switch on/off the machine,
  - to select the operating mode (4 different choices),
  - to set fan speed,
  - to select the relative humidity threshold value that activates the Boost speed (three pre-defined levels that can be set at 50%, 65% and

- 80%),
  - to activate "Night Mode",
  - to show filter status.
- Five different operating modes:
  - Continuous ventilation with heat recovery: the product cyclically extracts and introduces air to and from the room, recovering the energy stored in the exchanger;
  - Ventilation with air extraction only: stale air is extracted from the environment;
  - Ventilation with air intake only: the product introduces fresh air into the environment;
  - Automatic ventilation: the heat recovery unit automatically manages the airflows based on the relative humidity sensor readings;
  - "Night" ventilation: when the light in the room goes down, the product automatically forces the fan to run at minimum speed, regardless of the relative humidity values detected.
- Two air filters, a 65% IsoCoarse and a pre-filter for dust, both easily removable for washing.
- Mechanical quick closing system of the air delivery integrated into the product chassis.
- External rubber grille, which can be installed from the outside using plugs or from the inside, through the hole in the wall.
- Insect mesh, which can be installed into the duct from inside.

### ACCESSORIES



#### C TEMP

Code 12992



#### C HCS

Code 12994



#### TUBO PVC D.160 L=700 (HRW 20)

Code 22599



#### KIT FTR ISO COARSE 65%

PER INFORMAZIONI / FOR INFORMATION



#### MWS

Code 21148



#### RGR



#### WA

Code 21191

#### ITALY

Pre Sales:  
prevendita@vortice-italy.com  
After Sales:  
postvendita@vortice-italy.com

#### UNITED KINGDOM & REP. OF

IRELAND  
Sales Dept:  
sales@vortice.ltd.uk  
Technical Dept:  
technical@vortice.ltd.uk

#### OTHER COUNTRIES

Sales Dept:  
export@vortice-italy.com  
After Sales:  
after-sales@vortice-italy.com



**WSG-INOX**

Code 21192



**WSG-W**

Code 21193



**FTR ePM10**

**50% (M5)**

**d.155X40**

Code 21926