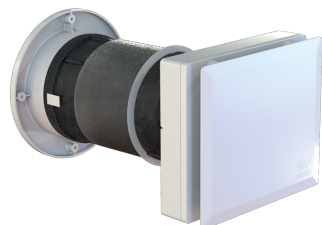


Technical Data Sheet

CODE 12437

VORT HRW 40 MONO EVO HCS

Decentralised heat recovery units



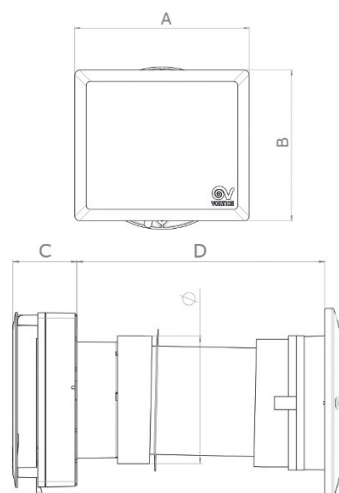
Certifications



TECHNICAL AND PERFORMANCE DATA

| | | | |
|---|---------------|--|------|
| Filter class | ISOCoarse 65% | Max airflow at Max speed (m ³ /h) | 40 |
| Frequency (Hz) | 50-60 | Max pressure at Max speed (mmH2O) | 4,8 |
| Insulation class | II° | Max pressure at Max speed (Pa) | 47 |
| Max absorbed current (A) | 0,05 | Max thermal efficiency (%) | 90 |
| Max absorbed power (W) | 5 | Pressure at 1st speed (mmH2O) | 1,7 |
| Max ambient temperature for continuous operation (°C) | 30 | Pressure at 1st speed (Pa) | 17 |
| Nominal diameter (mm) | 160 | Sound power LWA at Max speed [dB (A)] | 49,3 |
| Voltage (V) | 220-240 | Sound power LWA at Min speed [dB (A)] | 36,5 |
| Weight (Kg) | 3,30 | Sound power at Mid speed LWA [dB(A)] | 42,9 |
| Airflow at 1st speed (l/s) | 4,2 | Sound pressure at 3 m - min speed Lp [dB (A)] 3m - min speed | 19 |
| Airflow at 1st speed (m ³ /h) | 15 | Sound pressure at 3m at Max speed Lp [dB (A)] | 31,8 |
| Max airflow at Max speed (l/s) | 11,1 | Sound pressure Lp at 3m at Mid speed [dB (A)] | 25,4 |

DIMENSIONS



| | |
|-------------|-----|
| ∅ (mm) | 146 |
| Size A (mm) | 231 |
| Size B (mm) | 200 |
| Size C (mm) | 73 |
| Size D (mm) | 283 |

PER INFORMAZIONI / FOR INFORMATION

ITALY

Pre Sales:

prevendita@vortice-italy.com

After Sales:

postvendita@vortice-italy.com

UNITED KINGDOM & REP. OF

IRELAND

Sales Dept:

sales@vortice.ltd.uk

Technical Dept:

technical@vortice.ltd.uk

OTHER COUNTRIES

Sales Dept:

export@vortice-italy.com

After Sales:

after-sales@vortice-italy.com

Technical Data Sheet

CODE 12437

VORT HRW 40 MONO EVO HCS



Decentralised heat recovery units

DESCRIPTION

Decentralized heat recovery unit, for installation in residential and commercial premises of new buildings or those subject to renovation for energy efficiency. Ideal, as well as to ensure proper air exchange, also to prevent excess humidity in the room and mold growth on the walls.

- Shockproof and anti-UV plastic resin structure.
- Nominal diameter: 160 mm.
- Ceramic exchanger with hexagonal cells. High heat exchange efficiency (up to 90% at minimum airflow).
- High efficiency EC motor fan; five operating speeds, to maximize performance when needed, or to minimize noise and consumption.
- Integrated relative humidity probe.
- One-way remote control that allows to set parameters or to view useful product information. In detail:
 - to switch on/off the machine,
 - to select the operating mode (4 different choices),
 - to set fan speed,
 - to select the relative humidity threshold value that activates the Boost speed (three pre-defined levels that can be set at 50%, 65% and 80%),
 - to activate "Night Mode",

- to show filter status.
- Five different operating modes:
 - Continuous ventilation with heat recovery: the product cyclically extracts and introduces air to and from the room, recovering the energy stored in the exchanger;
 - Ventilation with air extraction only: stale air is extracted from the environment;
 - Ventilation with air intake only: the product introduces fresh air into the environment;
 - Automatic ventilation: the heat recovery unit automatically manages the airflows based on the relative humidity sensor readings;
 - "Night" ventilation: when the light in the room goes down, the product automatically forces the fan to run at minimum speed, regardless of the relative humidity values detected.
- Two air filters, a 65% IsoCoarse and a pre-filter for dust, both easily removable for washing.
- Mechanical quick closing system of the air delivery integrated into the product chassis.
- External rubber grille, which can be installed from the outside using plugs or from the inside, through the hole in the wall.
- Insect mesh, which can be installed into the duct from inside.

ACCESSORIES



C TEMP

Code 12992



C HCS

Code 12994



TUBO PVC D.160 L=700 (HRW 20)

Code 22599



KIT FTR ISO COARSE 65% (G3) D.127X10

Code 22166

PER INFORMAZIONI / FOR INFORMATION



MWS

Code 21148



RGR

Code 21190



WSG-INOX

Code 21192

ITALY

Pre Sales:
prevendita@vortice-italy.com
After Sales:
postvendita@vortice-italy.com

UNITED KINGDOM & REP. OF

IRELAND
Sales Dept:
sales@vortice.ltd.uk
Technical Dept:
technical@vortice.ltd.uk

OTHER COUNTRIES

Sales Dept:
export@vortice-italy.com
After Sales:
after-sales@vortice-italy.com

WSG-W

Code 21193

WA

Code 21191



FTR ePM10

50% (M5)

d.155X40

Code 21926