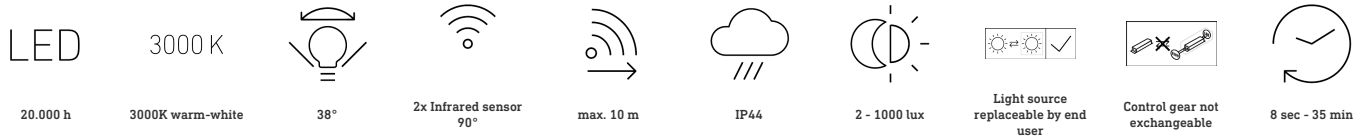
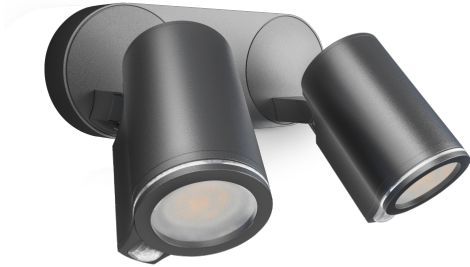


Sensor-switched LED floodlight

# Spot DUO S

with motion detector  
EAN 4007841 058647  
Article number 058647



## Function description

Powerfully bright LED duo. Wall spot DUO Sensor with two swivelling spotlight heads (180° horizontally, 90° vertically), each with 90° infrared sensor (10 m reach). 2 x 520 lm from 2 x 7 W for optimum illumination all around the building. With time setting (8 s - 35 min) and twilight setting (2-1000 lux). Several spots can be interconnected by cable. Includes 2 GU-10 LED lamps.

## Technical specifications

Dimensions (L x W x H)	175 x 247 x 98 mm	Mechanical scalability	No
With lamp	Yes, LED lamp	Reach, radial	r = 2 m (3 m <sup>2</sup> )
With motion detector	Yes	Reach, tangential	r = 10 m (79 m <sup>2</sup> )
Manufacturer's Warranty	3 years	Photo-cell controller	Yes
Settings via	Potentiometers	Luminous flux total product	1024 lm
Version	with motion detector	Measured luminous flux (360°)	1024 lm
PU1, EAN	4007841058647	Total product efficiency	68,5 lm/W
Application, place	Outdoors	Colour temperature	3000 K
Application, room	outdoors, all round the building, terrace / balcony, courtyard & driveway	Colour variation LED	SDCM5
Colour	Anthracite	Lamp	LED can be replaced
Includes corner wall mount	No	Soft light start	No
Installation site	wall	Continuous light	selectable
Installation	Wall, Surface wiring	Twilight setting	2 – 1000 lx
Impact resistance	IK03	Time setting	8 s – 35 Min.
IP-rating	IP44	Basic light level function	No
Protection class	I	Main light adjustable	No
		Twilight setting TEACH	No

<https://www.steinel.de>

Subject to technical modifications

04.2023 Page 1 from 4

Sensor-switched LED floodlight

# Spot DUO S

with motion detector  
EAN 4007841 058647  
Article number 058647



## Technical specifications

Ambient temperature	-20 – 40 °C
Housing material	Aluminium
Cover material	Plastic, transparent
Mains power supply	220 – 240 V / 50 – 60 Hz
Mounting height max.	2,50 m
Sneak-by guard	No
Capability of masking out individual segments	No
Electronic scalability	No

Interconnection	Yes
Interconnection via	Cable
Output	14,95 W
Colour Rendering Index CRI	= 81
Optimum mounting height	2 m
Detection angle	90 °

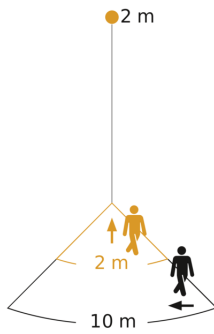
Sensor-switched LED floodlight

# Spot DUO S

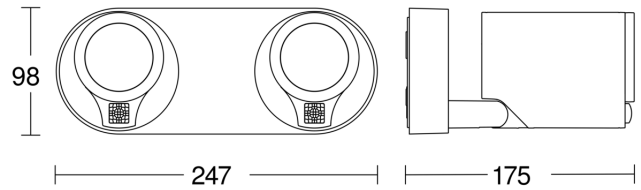
with motion detector  
EAN 4007841 058647  
Article number 058647



## Detection Zone

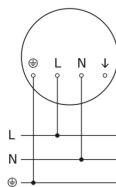


## Dimension Drawing

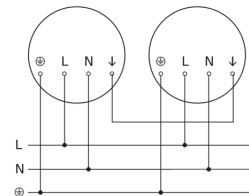


Possible mounting height: 1,80 m - 2,50 m  
Orange: radial  
Black: tangential

## Circuit diagram



## Master/master interconnection circuit diagram



Sensor-switched LED floodlight

# Spot DUO S

with motion detector  
EAN 4007841 058647  
Article number 058647



## Master/slave interconnection circuit diagram

