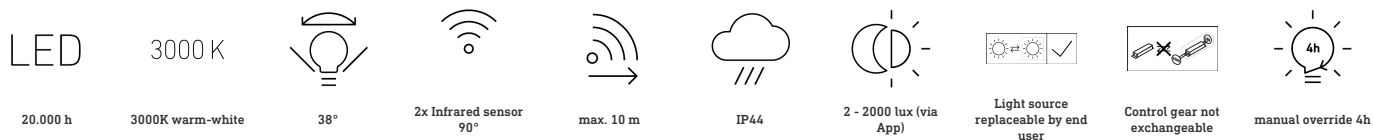
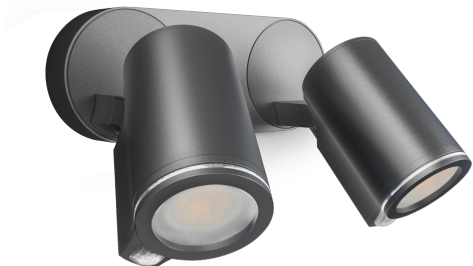


Sensor-switched LED floodlight

# Spot DUO SC

with motion detector & Bluetooth  
EAN 4007841 058654  
Article number 058654



## Function description

Excellent design. Intelligent technology. Turning through 180° and tilting through 90°, the LED double spot's two spotlight heads (2x 520 lm) provide 3000 K warm-white light. Wirelessly interconnectable by Bluetooth and adjustable and controllable via free app (twilight, time, lighting groups). Two 90° infrared sensors reliably monitor the surrounding area. Included lamp.

## Technical specifications

Dimensions (L x W x H)	175 x 247 x 98 mm	Mechanical scalability	No
With lamp	Yes, LED lamp	Reach, radial	r = 2 m (3 m <sup>2</sup> )
With motion detector	Yes	Reach, tangential	r = 10 m (79 m <sup>2</sup> )
Manufacturer's Warranty	3 years	Photo-cell controller	Yes
Settings via	Bluetooth	Luminous flux total product	1024 lm
Version	with motion detector & Bluetooth	Measured luminous flux (360°)	1024 lm
PU1, EAN	4007841058654	Total product efficiency	70,1 lm/W
Application, place	Outdoors	Colour temperature	3000 K
Application, room	outdoors, all round the building, terrace / balcony, courtyard & driveway	Colour variation LED	SDCM5
Colour	Anthracite	Lamp	LED can be replaced
Includes corner wall mount	No	Soft light start	No
Installation site	wall	Continuous light	selectable, 4h
Installation	Wall, Surface wiring	Functions	Timer, Master/slave override
Impact resistance	IK03	Twilight setting	2 – 2000 lx
IP-rating	IP44	Time setting	5 s – 60 Min.
Protection class	I	Basic light level function	No
		Main light adjustable	No

<https://www.steinel.de>

Subject to technical modifications

04.2023 Page 1 from 3

Sensor-switched LED floodlight

# Spot DUO SC

with motion detector & Bluetooth  
EAN 4007841 058654  
Article number 058654



## Technical specifications

Ambient temperature	-20 – 40 °C
Housing material	Aluminium
Cover material	Plastic, transparent
Mains power supply	220 – 240 V / 50 – 60 Hz
Mounting height max.	2,50 m
Slave modeselectable	Yes
Sneak-by guard	No
Capability of masking out individual segments	No
Electronic scalability	No

Twilight setting TEACH	Yes
Interconnection	Yes
Interconnection via	Bluetooth
Output	14,6 W
Colour Rendering Index CRI	= 81
Optimum mounting height	2 m
Detection angle	90 °

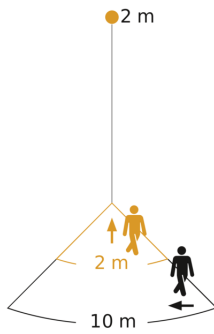
Sensor-switched LED floodlight

# Spot DUO SC

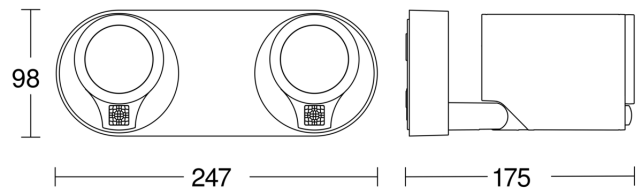
with motion detector & Bluetooth  
EAN 4007841 058654  
Article number 058654



## Detection Zone

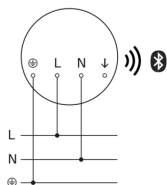


## Dimension Drawing



Possible mounting height: 1,80 m - 2,50 m  
Orange: radial  
Black: tangential

## Circuit diagram Bluetooth



## Master/master bluetooth interconnection circuit diagram

