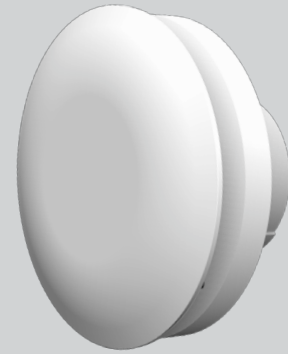


MON-DMEVR100 / HT

- Continuously running 100mm
- Designed to comply with the latest Building Regulations Parts L1A and F 2021
- SAP PCDB listed with SFP's down to 0.08 W/l/s
- Near silent operation independently tested
- IPX5 rated, wall and ceiling mounted Zones 1, 2 and 3
- Low ceiling void - 56mm (100mm spigot)
- Easy to commission, fully adjustable variable control platform
- Intelligent humidistat option with proportional speed increase and timer
- Comfort control option
- 7-year warranty



Increased whole ventilation rates, should not mean increased noise levels. The NBR dMEV C fan, available in 100mm and 125mm, provides adequate ventilation whilst minimising noise.

The fan is designed in line with the Approved Document F 2021 Building Regulations, meeting the increased whole house ventilation rates.

Table 1.3 - Minimum whole dwelling ventilation rates determined by the numbers of bedrooms.

No. of bedrooms	2013 Edition	2021 Edition	Increase
1	13l/s	19l/s	46%
2	17l/s	25l/s	47%
3	21l/s	31l/s	47%
4	25l/s	37l/s	48%
5	43l/s	43l/s	48%

The minimum whole dwelling ventilation rate for the supply air should meet the higher of the two following result:

- A minimum rate of 0.3l/s per m² of internal floors area
- A minimum rate determined by the number of bedroom, as per Table 1.3

Nuisance tripping has also been minimised within the fan logic. The integral humidity sensor versions have functionality that allows for proportional speed increase up to 85% relative humidity (RH) before enabling Boost.

The Lo-Carbon NBR dMEV C is complete with IPX5 rating, allowing flexible installation within Zone 1, 2 and 3.

A back pressure detection system option is available, to Boost if the system pressure increase momentarily due to external wind conditions. A silent mixed flow impeller means the Lo-Carbon NBR dMEV C can meet the requirements of many domestic installations without the need to use a traditional centrifugal fan.

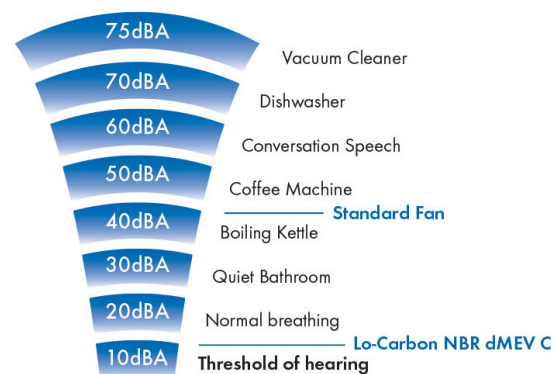
A brand new control platform also provides fully adjustable airflow, meaning wholehouse rates can be achieved easily using fewer fans.

Comfort Control Option

Designed to offer a more relaxing environment to the homeowner, the Lo-Carbon NBR dMEV C features a delayed start. This patented comfort control option allows the homeowner to enjoy a quiet, peaceful bathroom for up to 20 minutes before the Boost activates. Furthermore, if the light switch turns On and Off within three minutes, the Boost will not activate. No more disturbing the family if the bathroom light is turned on during the night.

Near Silent Operation

The fan has been designed to be as discreet as possible for homeowners, with independently tested sound levels as low as 11.3dB(A) at 6l/s.



Model

Lo-Carbon NBR dMEV C

For kitchen, utility and bathroom/toilet applications, the continuous running dMEV R fan is available as standard or as a humidistat model which incorporates an ambient response humidistat. The fan will increase the extract rate if the humidity rises above the point set at installation. Both fans will have optional Comfort Control, which includes a timer function.

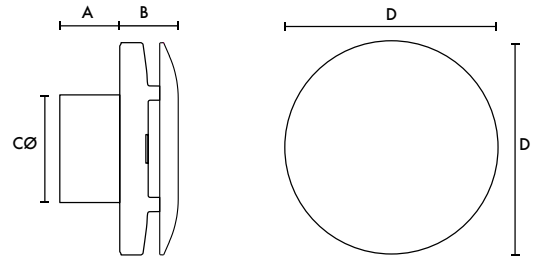
Variable speed setting

Model

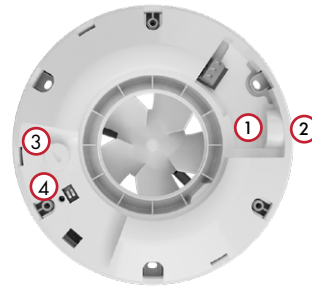
MON-DMEVR100 - Standard

MON-DMEVR100HT - Humidistat

Dimensions (mm)



Model	A	B	CØ	D
100	56	54	99	195



- ① Rear cable entry
- ② Side cable entry (cut plastic side wall to access)
- ③ 100% variable speed adjustment
- ④ Installation mode (SW1)
Back pressure detection system (SW2)

Sound

Model	Speed	dB(A)
100	Min	7.4
	Max	34.3
125	Min	8.5
	Max	37.9

SAP PCDB Performance 2021

Unit configuration	Location	100 Model	125 Model
In room (Rigid duct)	Kitchen (13l/s)	0.14	0.14
	Kitchen/wet room (8l/s)	0.11	0.12
Through wall	Kitchen (13l/s)	0.08	0.09
	Kitchen/wet room (8l/s)	0.08	0.10

Performance Guide

