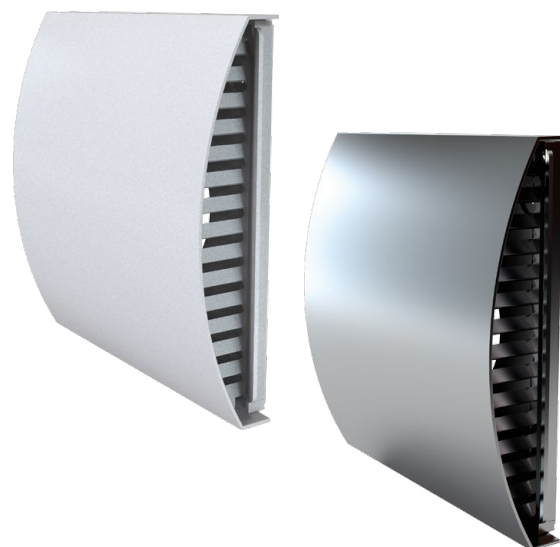


# AH-10

## Plastic hoods

### Features

- Decoration of supply and exhaust vents of public, residential and industrial ventilation systems.
- Outdoor wall mounting.



### Design

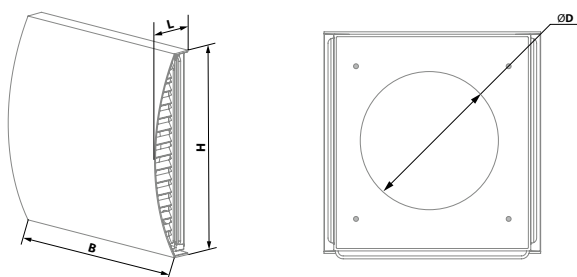
- Made of white PVC
- High resistance to ultraviolet
- Non-inflammable
- Compatible with Ø 100, 125 and 160 mm air ducts
- **AH-10 160** is connected to Ø 150 and 160 mm air ducts.
- Equipped with a canopy to remove water drops from walls.

### Modifications

- **AH-10 white 100, 125 and 160:** models in white colour.
- **AH-10 chrome 100, 125 and 160:** models with an aluminium plate with brushed stainless steel effect finish.

### Overall dimensions

Model	Dimensions [mm]				Cross-sectional area [m <sup>2</sup> ]
	B	H	L	D	
AH-10 100	220	230.5	54	100	0.00632
AH-10 125	220	230.5	54	125	0.00632
AH-10 160	220	230.5	54	160	0.00632



### Technical data

