

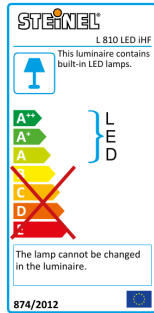
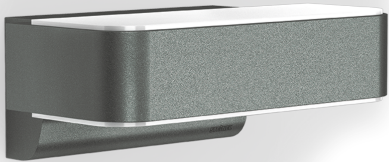
Sensor-switched LED outdoor light

L 810 LED iHF Connect

Anthracite

EAN 4007841 065706

Article number 065706



- Up-/Downlight
- LED
- 3000 K
3000K warm-white
- intelligent high frequency sensor
160°
- 1 - 5 m
- IP44
- 2 - 1000 lux
- 5 sec - 15 min
- soft light start
- 10% basic brightness

Function description

The most modern outdoor light in the world. Designer sensor-switched outdoor light L 810 LED iHF Connect with invisible high-frequency sensor, ideal for building entrances and fronts of buildings, 12,5 W STEINEL LED lighting system, 858 lm, 160° coverage angle, reach from 1 - 5 m, for stylish up and downlighting, includes soft light start and optional manual override for 4 hours. Wirelessly interconnectable by Bluetooth and adjustable and controllable via free app.

L 810 LED iHF Connect

Anthracite

EAN 4007841 065706

Article number 065706



Technical specifications

Dimensions (L x W x H)	146 x 230 x 91 mm	Mechanical scalability	No
Mains power supply	220 – 240 V / 50 – 60 Hz	Reach, detail	Detection zone adjustable on 2 axes
Mounting height max.	2,50 m	Reach, radial	r = 5 m (35 m ²)
Sensor Technology	iHF (intelligent high-frequency technology)	Reach, tangential	r = 5 m (35 m ²)
Transmitter power		Photo-cell controller	Yes
Output	12,5 W	Twilight setting	2 – 1000 lx
Interconnection	Yes	Time setting	5 s – 15 Min.
Type of interconnection	Master/master	Basic light level function	Yes
Slave mode/selectable	Yes	Basic light level function time	10/30 min, all night
Luminous flux	858 lm	Main light adjustable	50 - 100 %
Efficiency	69 lm/W	Soft light start	Yes
Colour temperature	3000 K	Continuous light	selectable, 4h
Colour variation LED	SDCM3	Impact resistance	IK03
Farbwiedergabeindex	80-89	IP-rating	IP44
With lamp	Yes, STEINEL LED system	Protection class	II
Lamp	LED cannot be replaced	Ambient temperature	-20 – 50 °C
LED life expectancy (max. °C)	50000 h	Transmitter range	30 m
Drop in luminous flux in accordance with LM80	L70B10	Housing material	Aluminium
Base	without	Cover material	Plastic, opal
LED cooling system	Active and Passive Thermo Control	Manufacturer's Warranty	3 years
With motion detector	Yes	Settings via	Bluetooth, Potentiometers
Detection angle	160 °	With remote control	No
Sneak-by guard	Yes	Version	Anthracite
Capability of masking out individual segments	No	PU1, EAN	4007841065706
Electronic scalability	Yes		

Sensor-switched LED outdoor light

L 810 LED iHF Connect

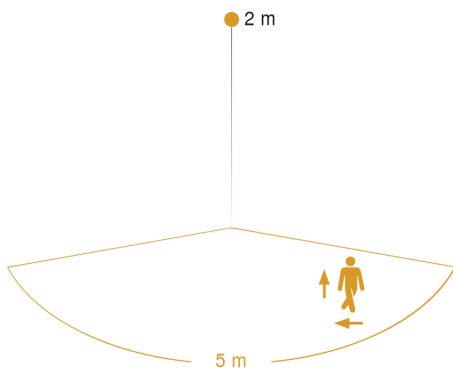
Anthracite

EAN 4007841 065706

Article number 065706

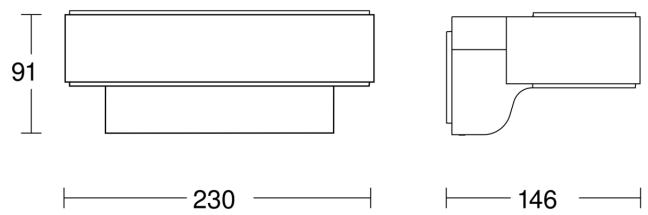


Detection Zone

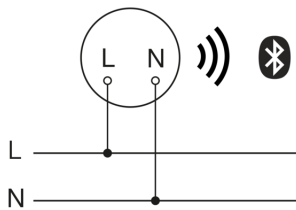


Mögliche Montagehöhe: 1,80 m – 2,50 m
Orange: radial und tangential

Dimension Drawing



Circuit diagram Bluetooth



Master/master bluetooth interconnection circuit diagram

