

# Technical Data Sheet

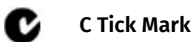
CODE 12413

## VORTICE 300/12" ARI

Wall/window axial fans



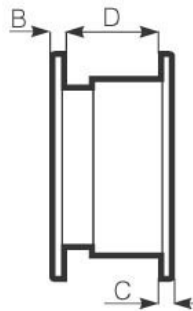
### Certifications



### TECHNICAL AND PERFORMANCE DATA

Absorbed Current max (A)	0,21	Weight (Kg)	7,2
Absorbed Power max (W)	45	Delivery max - Extract (l/s)	333,3
Frequency (Hz)	50/60	Delivery max - Extract (m3/h)	1200
Insulation Class	II°	Delivery max - Intake (l/s)	236,1
IP	X4	Delivery max - Intake (m3/h)	850
Max absorbed Power at 60Hz (W)	45	Delivery max (m³/h)	1200
Max ambient temperature for continuous operation (°C)	50	RPM	850
Max ambient temperature for continuous operation 60Hz (°C)	40	Rpm - Exhaust	850
Ø Discharge Hole (mm)	300	Rpm - Supply	1150
Voltage (V)	220-240	Sound Pressure level Lp [dB (A)] 3m	40,7

### DIMENSIONS



Etichetta Energetica	N0
Ø glass hole	324/329
Ø wall hole	435/440
Size A (mm)	495
Size B (mm)	10,5
Size C (mm)	11,5
Size D (mm)	210
Size E (mm)	2/38

#### PER INFORMAZIONI:

Servizio al Cliente: tel +39 02 90699395 premendo 1 dopo messaggio registrato (consulenza su prodotti e impianti)

Pre & Post Vendita: fax +39 02 90699302

Email prevendita: [prevendita@vortice-italy.com](mailto:prevendita@vortice-italy.com)

# Technical Data Sheet

CODE 12413

## VORTICE 300/12" ARI

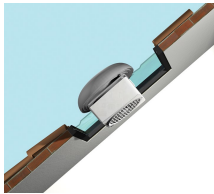
Wall/window axial fans



### DESCRIPTION

- Model designed for installation recessed into wall.
- Material: UV resistant ABS plastic (prevents ageing caused by exposure to sunlight)
- Nominal diameter 300 mm.
- Motor protected against thermal overload, with shaft turning in self-lubricating bushings, coupled to screw type thermoplastic impeller
- with wing profile blades.
- Maximum extract air flow: 1200 m<sup>3</sup>/h
- Maximum supply air flow 850 m<sup>3</sup>/h
- IMQ SAFETY and IMQ PERFORMANCE certifications
- Vortice speed controller.

### ACCESSORIES



**KIT TE 300/12''  
(TORRETTA)**

Code 13003



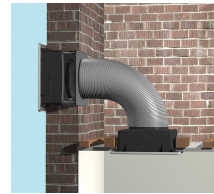
**KIT SO 300/12''  
(SOFFITTO)**

Code 13014



**KIT ML 300/12''  
(MURO LARGO)**

Code 13017



**KIT TC 300/12''  
(TETTO CON  
CONDOTTO)**

Code 13029

#### PER INFORMAZIONI:

Servizio al Cliente: tel +39 02 90699395 premendo 1 dopo messaggio registrato (consulenza su prodotti e impianti)

Pre & Post Vendita: fax +39 02 90699302

Email prevendita: [prevendita@vortice-italy.com](mailto:prevendita@vortice-italy.com)